

NOTE:

1.ELECTRICAL:

IMPEDANCE: $90 \pm 7\Omega$.
 VOLTAGE RATING: 30VAC.
 CURRENT RATING:
 1.5A FOR FOR VBUS ADD GND CONTACTS,
 0.25A FOR OTHER CONTACTS.
 INSULATION RESISTANCE: 20MEGOHMS MAX.
 LOW LEVEL CONTACT RESISTANCE:
 30 mΩ MAX FOR VBUS ADD GND CONTACTS.
 50 mΩ MAX FOR OTHER CONTACTS.
 DIELECTRIC STRENGTH: NO BREAKDOWN SHALL
 OCCUR WHEN 100 VOLTS AC (RMS) IS APPLIED
 BETWEEN ADJACENT CONTACTS OF UNMATED
 AND MATED CONNECTORS.

2.MECHANICAL:

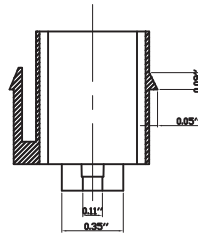
MATING: 35N MAX.
 WITHDRAWAL: 10N MIN.
 DURABILITY: 1500 CYCLES MIN.

4.MATERIEL:

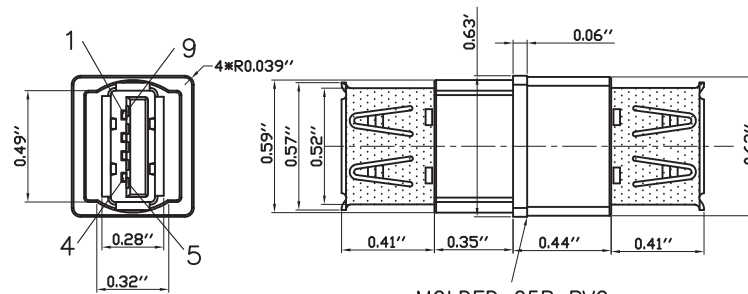
USB CONTACTS: BRASS AND PHOSPHOR BRONZE,
 T=0.20MM,GOLD PLATED.
 USB INSULATOR: P.B.T. UL 94V-0 RATED.
 SHELL: BRASS T=0.30MM,NICKEL PLATED.
 ALL MATERIEL ACCOMMODATE UL STANDARD,
 MEET ROHS COMPLIANT.

5.ENVIRONMENTAL:

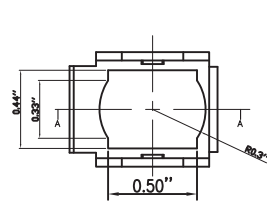
Operating Temperature Range: -20°C to $+80^{\circ}\text{C}$.
 Storage Temperature Range: -20°C to $+80^{\circ}\text{C}$.
 Nominal Temperature Rating: $+20^{\circ}\text{C}$.



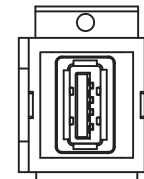
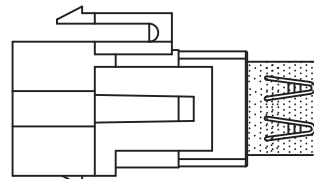
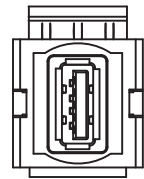
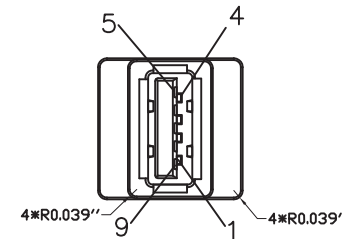
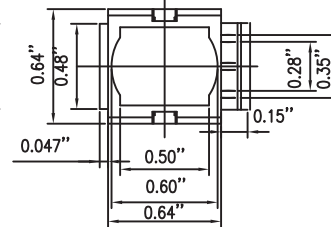
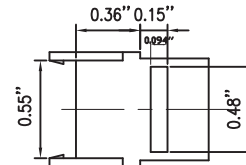
SECTION A-A



MOLDED 25P PVC



MODULE DRAWING(UNIT:INCH)



ASS'Y VIEW

PIN ASSIGNMENT

A Female	1	A Female	1
	2		2
	3		3
	4		4
	5		5
	6		6
	7		7
	8		8
	9		9
SHELL		SHELL	

NOTES:

- Module: Snap in module, MOLDED ABS
- Adapter: USB AF/AF REV 3.0 Adapter, BLUE INSULATION, NICKEL PLATED SHELL.
- ALL HOOD: MOLDED 25P PVC (Molding PVC Color Same With Module)



Keystone Clip (color), USB 3.0, Type A
 Coupler Female - Female Pinning 1:1


Keystone-Clip (Farbe), USB 3.0, Typ A
 Koppler Buchse - Buchse Pinning 1:1

Available Colors Verfügbare Farben:	 schwarz / black PS-KS-USB3.0AA-SW	 weiß / white PS-KS-USB3.0AA-WS
--	--	---



WEEE-Reg.-Nr. DE 38986660

Date: 05.08.2022	SP
Checked by: 05.08.2022	FM
Datasheet:	PS-KS-USB3.0AA-XX



EVN
 electronic components GmbH
 MEDIA TECHNOLOGY