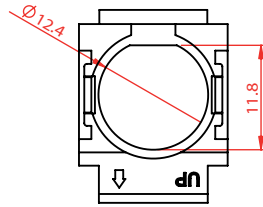
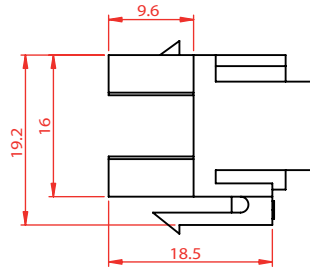
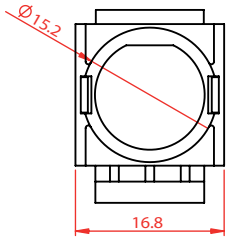
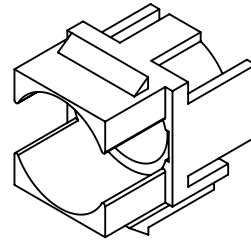
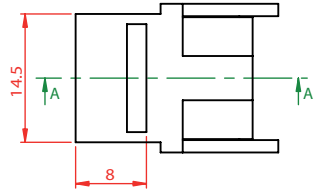


剖面圖 A-A
比例 2 : 1



MATERIAL

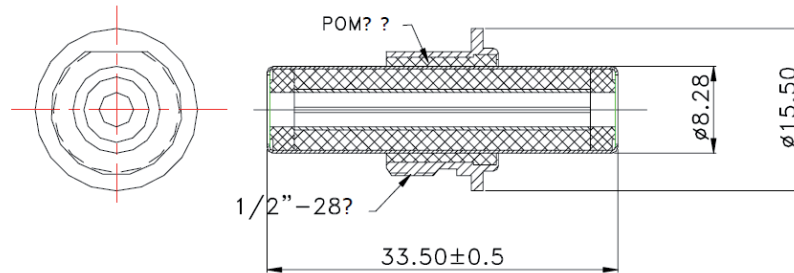
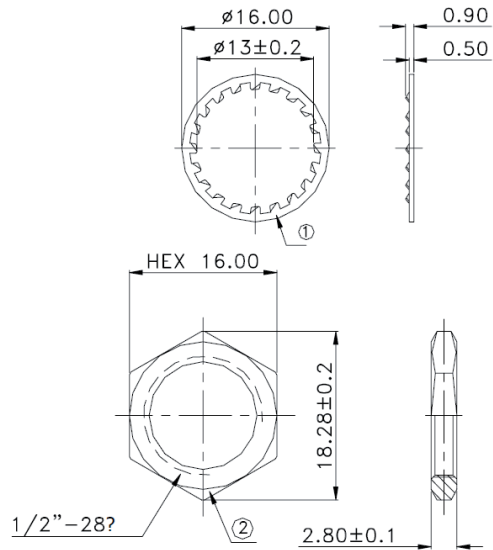
HOUSING : ABS high-impact UL94V-0 thermoplastic

PHYSICAL CHARACTERISTICS

OPERATING TEMPERATURE RANGE : -10 °C TO 60 °C
 STORAGE TEMPERATURE RANGE : -40 °C TO 68 °C
 HUMIDITY : 10%~90%RH

PS-KS-RCA-XX

- BL = blue
- GE = yellow
- GN = green
- RT = red
- SW = black
- WS = white



Date:	03.05.2016	AB	
Edited by:	03.05.2016	AB	
Checked by:	03.05.2016	FM	
Revision:			
		Part number:	PS-KS-RCA-XX

Keystone Clip (color) with Cinch Coupler
 Female - Female